

GO CAPTURE
Capture Everything

SONY

View-DR

Worlds Best Class Wide-D technology



What's View-DR?

- World's best class Wide Dynamic Range technology to compensate strong backlight
- Human eye has a capability to see extremely dark and bright scene at the same time
- Normal camera doesn't have a capability to show extremely dark and bright scene at the same time
- With View-DR, camera gains a similar capability as human eye which shows extremely dark and bright scene at the same time

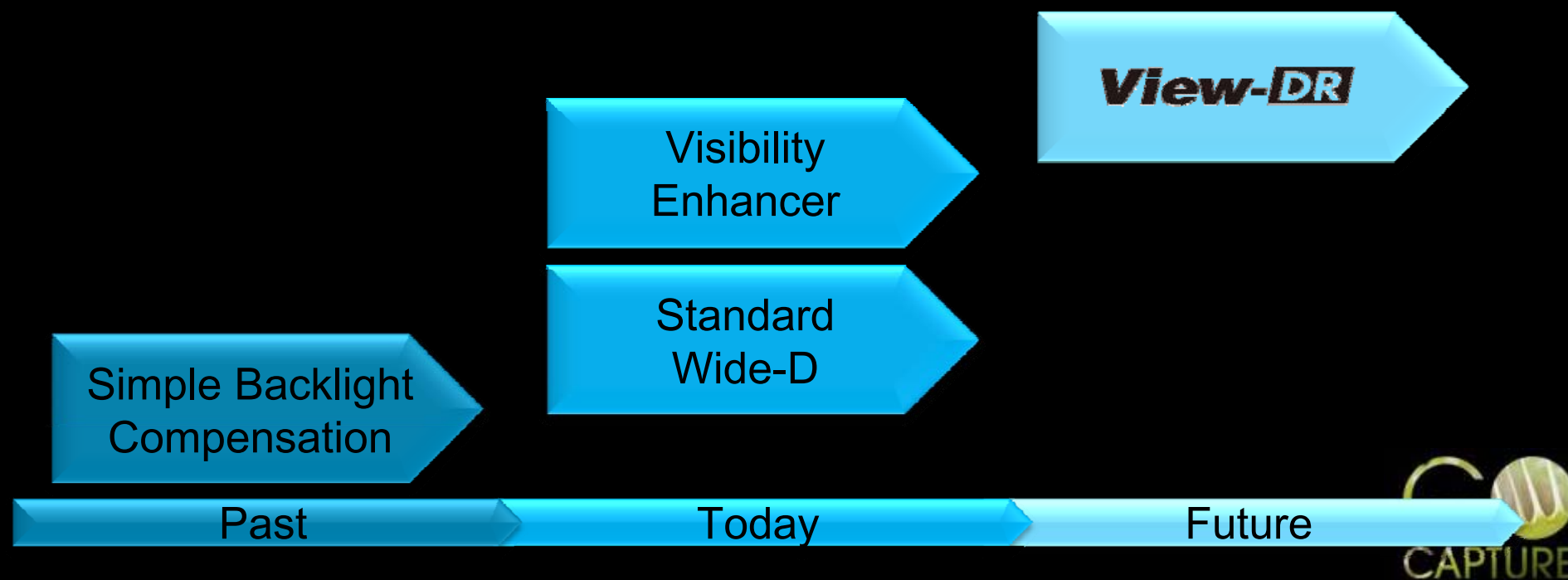
Appendix : View-DR detail explanation

View-DR is Sony's latest technology to produce images with an extremely wide dynamic range. View-DR is a combination of Sony's full-capture Wide-D technology, the high-speed "Exmor" CMOS sensor, and Visibility Enhancer (VE). The full-capture Wide-D technology used in View-DR uses an electronic shutter to capture multiple images, to reproduce each frame. One image is taken using a 'standard' exposure time and either one or three images are taken using very short exposure times depending on the camera type. With the newly developed View-DR algorithm, all of the electrons converted from the captured light is fully used by the imager, which is quite different from DynaView and some other Wide-D technologies in the industry that discard approximately 1/2 of the electrons. As a result, View-DR nearly doubles the sensitivity compared to conventional Wide-D technologies. To capture multiple HD resolution images at a very high speed, the "Exmor" CMOS sensor was adopted because of its high-speed readout characteristics. During the process of combining multiple images, the Visibility Enhancer (VE) is employed to provide a high level of chrominance and luminance. With View-DR, the monitored images become very visible - sometimes even more than when viewed with our naked eyes.

The logo for View-DR, featuring the text "View-DR" in a bold, italicized, sans-serif font. The "DR" is enclosed in a white rectangular box with a black border.

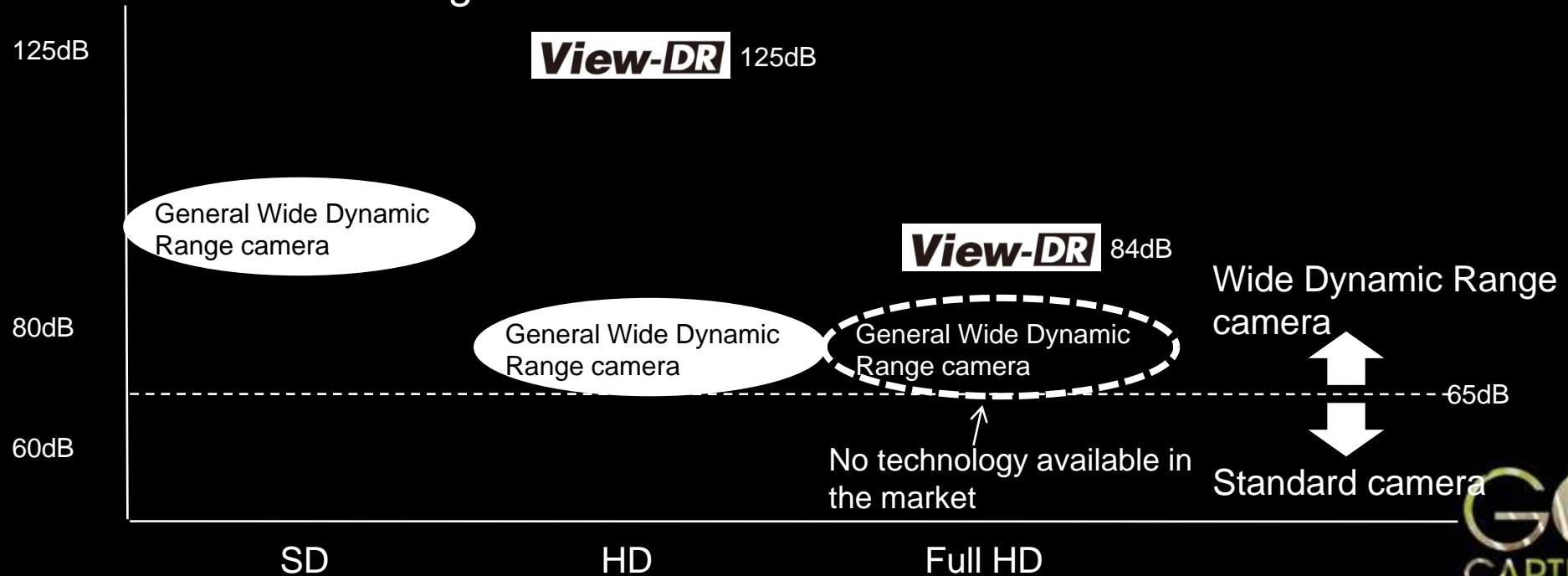
Wide Dynamic Range technology trend

- View-DR is the next generation of Wide Dynamic Range technology to provide the best possible picture quality in the industry



Wide Dynamic Range technology with resolution

- Generally, as the resolution gets higher, the dynamic range gets lower. This is imager (CMOS/CCD) technology trade off and solved only by revolution of imager



SONY

Believe it or not, ALL pictures are captured by SNC-CH140.

No Photoshop modification made...

Enjoy your surprise...



SONY

Car Park, Entrance



View-DR OFF

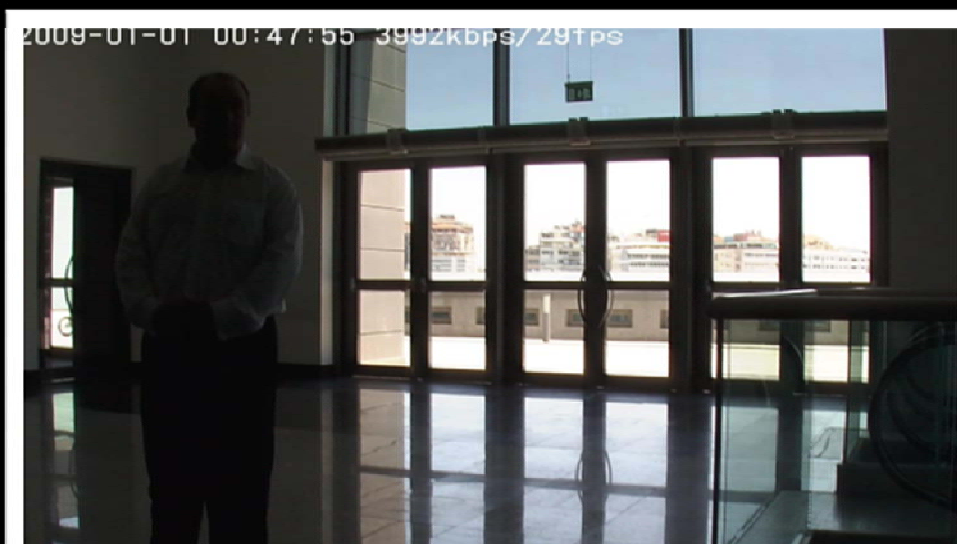


View-DR ON

G
CAPTURE

SONY

Convention center, Entrance



View-DR OFF

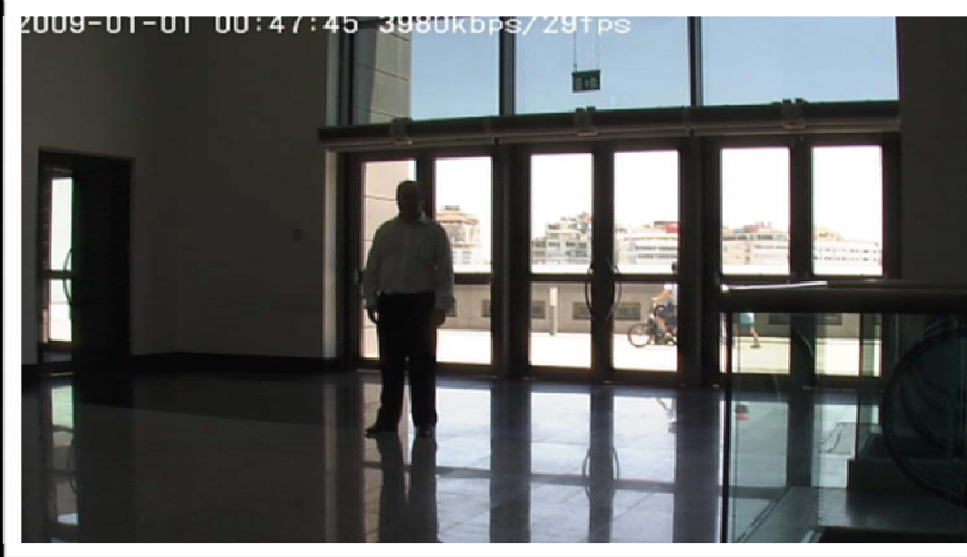


View-DR ON



SONY

Convention center, Entrance



View-DR OFF



View-DR ON

